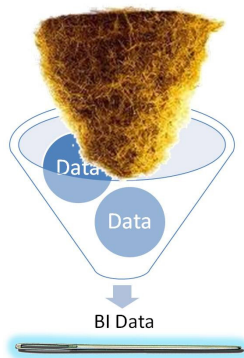


Empower Your Users with Tools Formerly Available Only to Managers

Overview

iBi graphically isolates the "needle in the haystack" when investigating possible security breaches, critical system activities or planning your resource allocations



Remove the hay to find the needles!

iBi can also be used for general BI investigations

iBi is a comprehensive Business Intelligence tool intended to be integrated into user applications (Green or GUI)

- ✓ Requires no special preparation – runs on your current data
- ✓ Every field becomes a tab – a “dimension”
- ✓ Click any tab to see all the other information summarized according to the values appearing in that tab
- ✓ Drilldown is just a tab away
 - Select subjects to add to the filter
 - Click on another tab to summarize the related information
- ✓ Restricts the user to the subject they are currently working on, e.g. Order, Customer, Account,...

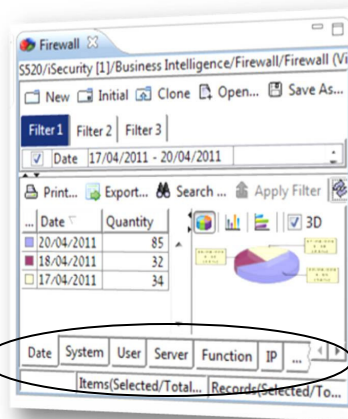
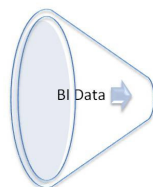
iBi empowers your users, helping them make better customer facing, real time decisions

iBi interfaces to all applications such as ERP, HR, Financial,...

iBi can also be used for general BI investigations

iBi uses filters to process large quantities of transaction data. This process:

- ✓ Graphically isolates the "needle in the haystack" when investigating possible security breaches, critical system activities or planning resource allocations.
- ✓ Eliminates the need for time & resource consuming implementation of the full data warehouse
- ✓ Affordable licensing - unlike other BI tools
- ✓ Data can be exported to Excel, HTML, CSV,...



Working with iBi

iBi makes investigations a snap.

The user simply clicks on a dimension to Re-"VIEW" an updated view of the data

iBi enables users to create views based upon exactly what they are authorized to see. Users can effortlessly "slice and dice" data into graphical charts for Business Intelligence analysis.